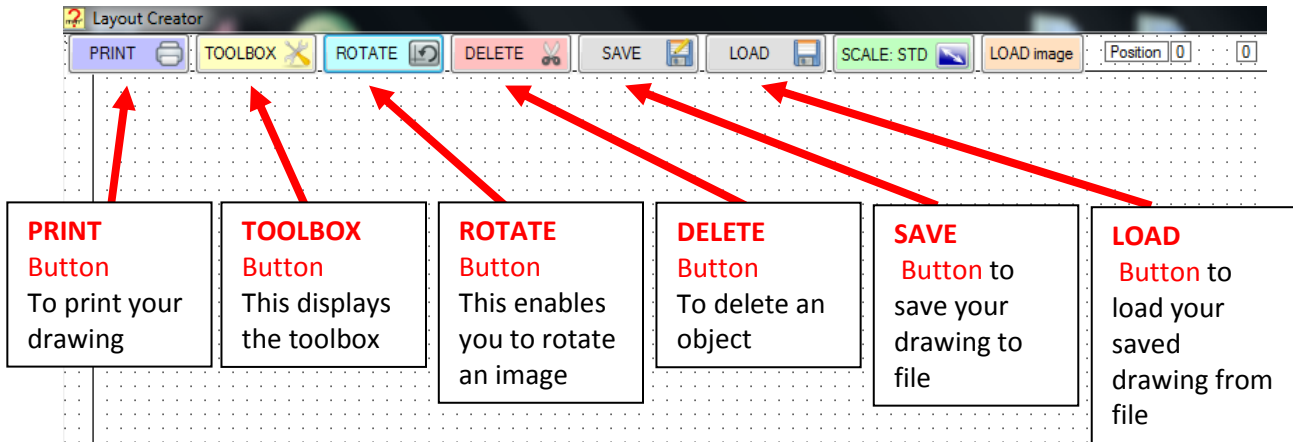




PANEL LAYOUT CREATOR



TOOLBOX

LINE: Whilst selected - draws a line from the point where you click and hold down the Left mouse button to where you release the Left mouse button. TURN OFF again when finished drawing lines

ARROW: Whilst selected - draws an arrow from the point where you click and hold down the Left mouse button to where you release the Left mouse button, the arrow head will be at the end point. TURN OFF again when finished drawing arrows

SQUARE: Whilst selected - draws a square/rectangle from the point where you click and hold down the Left mouse button to where you release the Left mouse button. TURN OFF again when finished drawing squares

CIRCLE: Whilst selected - draws a circle the centre being the point where you click and hold down the Left mouse button, the radius is where you release the Left mouse button. TURN OFF again when finished drawing circles

COLOUR: choose the colour of your line / arrow / square or circle.

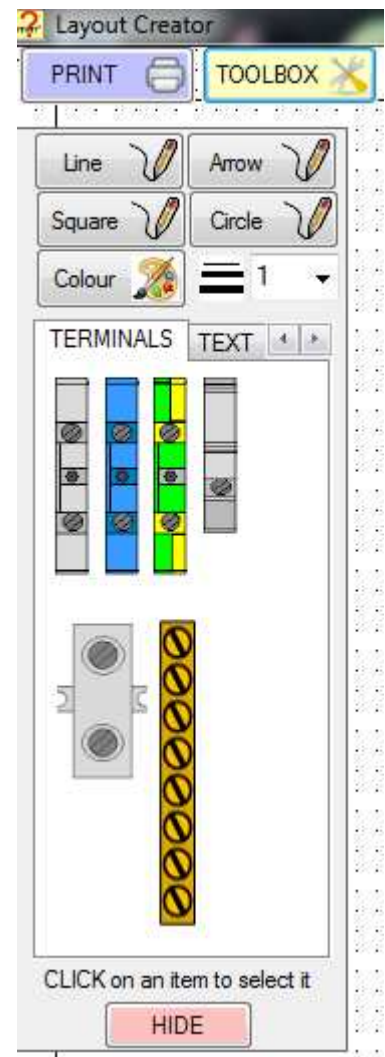
THICKNESS: choose how thick your line / arrow / square or circle is to be.

LINE STYLE: choose the style of your line – solid, dash, dot

IMAGE TABS: scroll around the tabs to find an image to use, click on the image and move the mouse, the image will follow, left click to drop it on the drawing, use the arrow keys or grab it with the mouse to move it around the screen.

USE THE TEXT BOXES for text – double click to enter text and select font and text colour.

The TOOLBOX can be moved around the screen if it is in the way, HIDE it when not in use.



IMAGES

Please place the images on the drawing in the order you need them, there is no option to change their order, you will not be able to 'bring to the front' or 'send to the back'

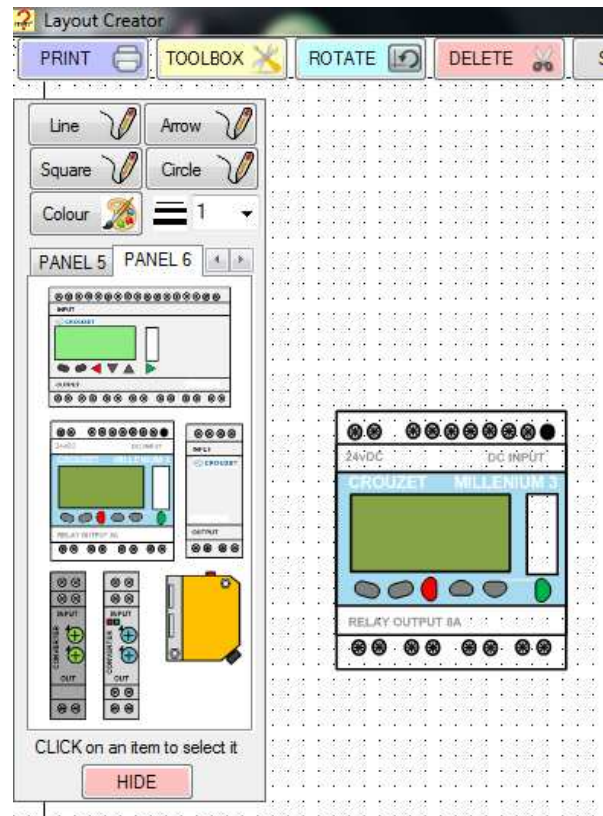
IMAGES: left click on the image to select it, move the mouse and the image will follow, left click to drop it on the drawing, use the arrow keys or grab it with the mouse to move it around the screen.

USER IMAGES: the tab **USER** allows you to place an image on the drawing which when right mouse clicked will display the ability to import your own image; you can scale your imported image at the same time.

Use the ROTATE button to rotate the image

DELETE: to delete an image, left mouse click the image then click on the DELETE button, the image will be deleted

SCALE: to scale an image – right mouse click the image and use the slider to adjust the image size



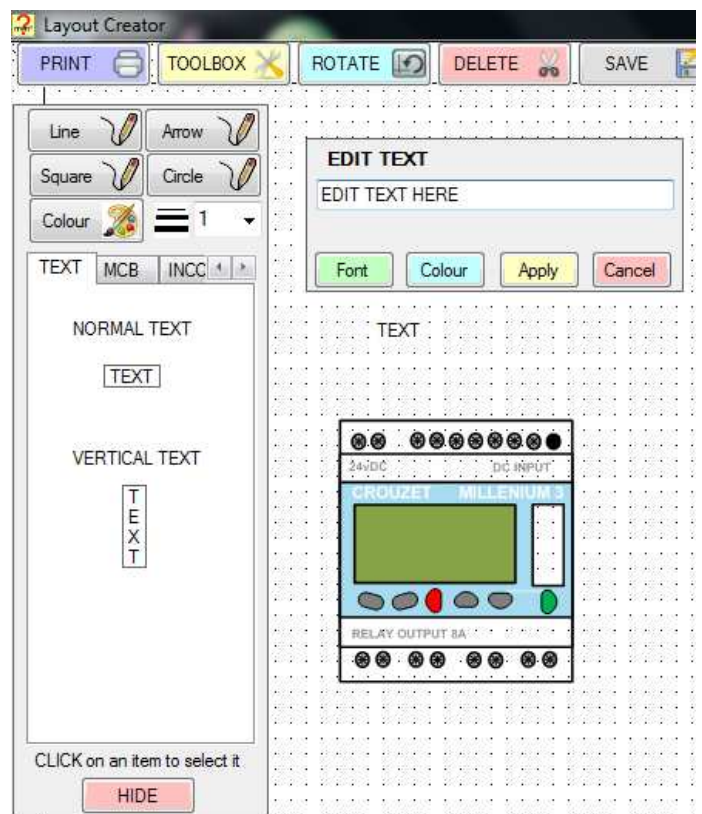
IMAGES - TEXT

TEXT: click on the text box and move the mouse, the text box will follow, left click to drop it on the drawing, use the arrow keys or grab it with the mouse to move it around the screen.

Double click to enter your text and change font and colour, there is a maximum number of characters, you may need to use more than one text box for a sentence.

Text boxes **cannot** be **rotated** with the ROTATE button.

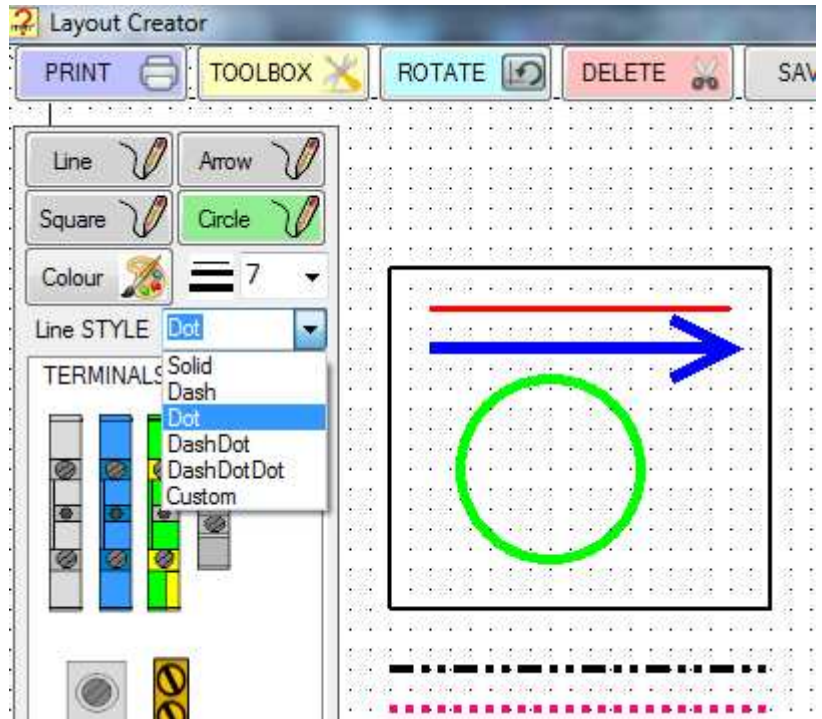
DELETE: to delete a text box, left mouse click the text box then click on the DELETE button, the text box will be deleted



LINES

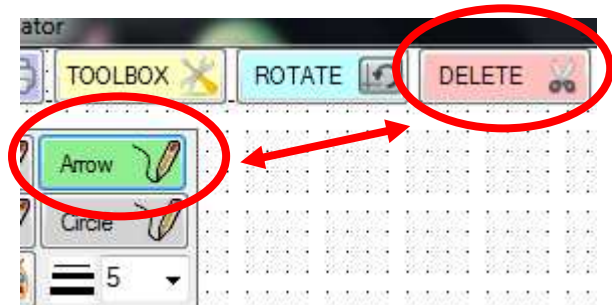
Click on the button to select either: LINE, ARROW, SQUARE or CIRCLE. The button colour will change to green to indicate it has been selected.

Choose the colour and line thickness of the LINE, ARROW, SQUARE or CIRCLE to be drawn and the line STYLE (dash / dotted / solid). Starting point is where you click and hold down the Left mouse button, the end point is where you release the Left mouse button. CLICK ON THE BUTTON again when finished drawing lines etc, the button colour will revert back to grey again. (If you don't you will find you will accidentally draw lines when using the mouse to drag images around the drawing).



Lines etc **cannot** be rotated with the ROTATE button, **or** dragged with the mouse.

DELETE: to delete a LINE, ARROW, SQUARE or CIRCLE, ensure the relevant button has been clicked and is now green in colour (to select an arrow for deletion click on the arrow button, to select a circle for deletion click on the circle button), then click on the DELETE button to delete the LINE, ARROW, SQUARE or CIRCLE, these will be deleted in the reverse order they are drawn, the last LINE, ARROW, SQUARE or CIRCLE drawn will be deleted first then the next and so on, continual clicking on DELETE will delete all LINES, ARROWS, SQUARES or CIRCLES.



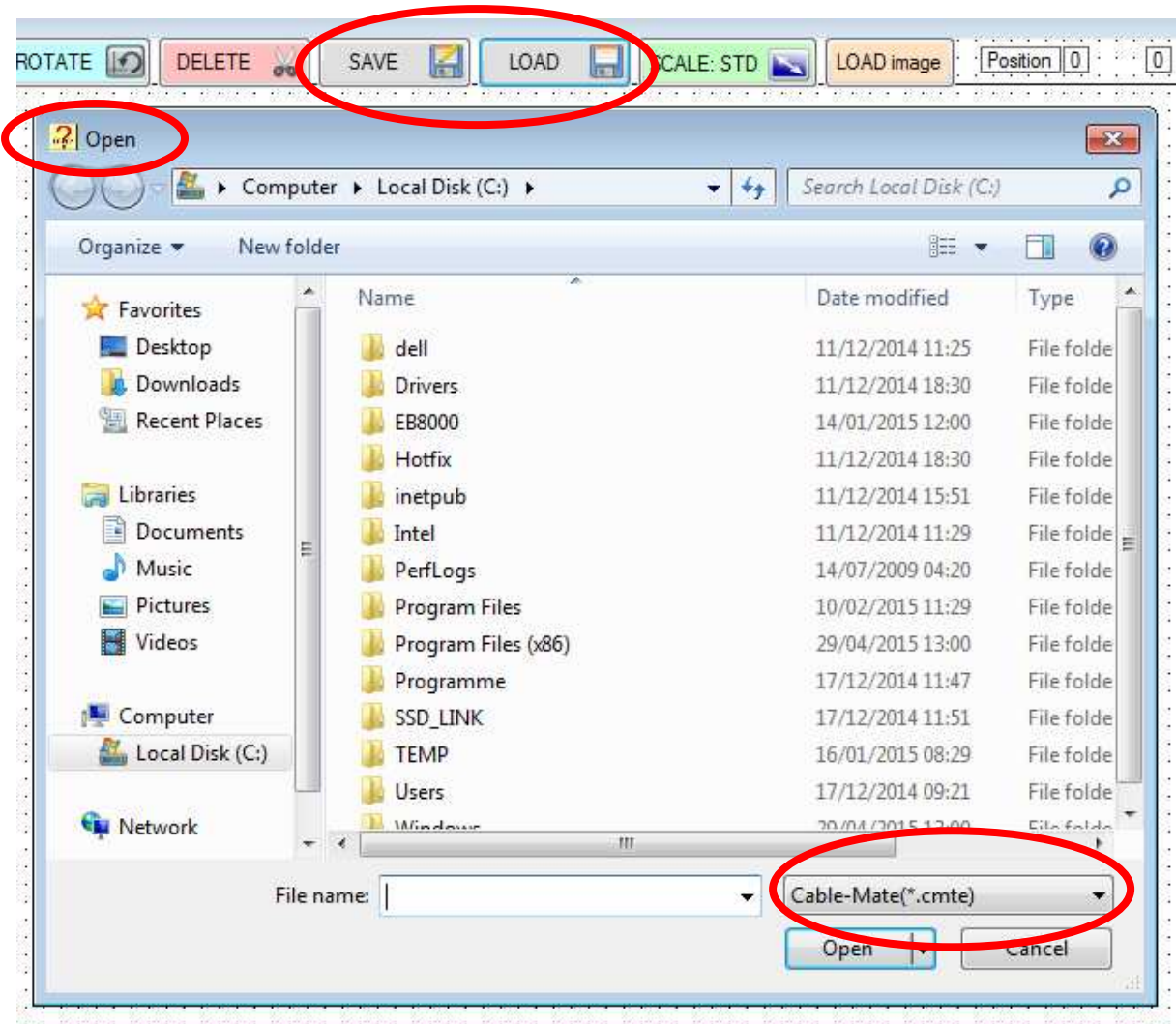
Click again on the relevant button to stop being able to delete any further LINES, ARROWS, SQUARES or CIRCLES, the button colour will revert back to grey again.

SAVE and LOAD

SAVE: saves your drawing for future use. The file format is a .cmte format only for use with this program.

LOAD: this allows you to load a previously saved drawing; the file format is a .cmte only. It will **not** load any other format.

Once loaded the drawing can be edited / added to as needed.

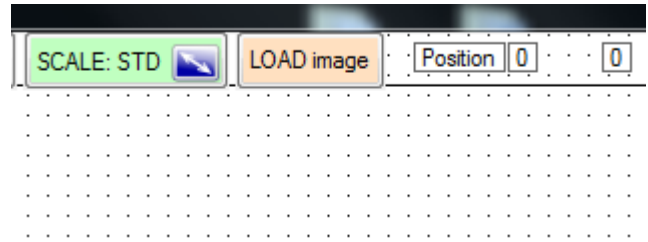


BUTTONS

SCALE: standard or small. This button alters the scale of each image on the drawing to either standard or smaller. (also use the right mouse click to change the size of an image if needed)

LOAD image: This button loads a background image; its primary use is for building layouts after which symbols can be easily added from the TOOLBOX and SYMBOL tab. Click the button to see a file open dialogue box, the maximum image size is set at the screen size. A background image **cannot be moved or deleted** and is centred on the screen.

POSTION LABEL: these labels indicate the position of the image or textbox on the screen; use these to ensure that each image or textbox is in line with each other. Use the keyboard arrow keys to make fine movements.



The Panel Layout Creator is a very basic CAD style drawing program which is included with the Cable-Mate electrical cable calculation software package.

I accept no liability for its use or any issues arising from Saving, Loading or Printing of any drawing created.